

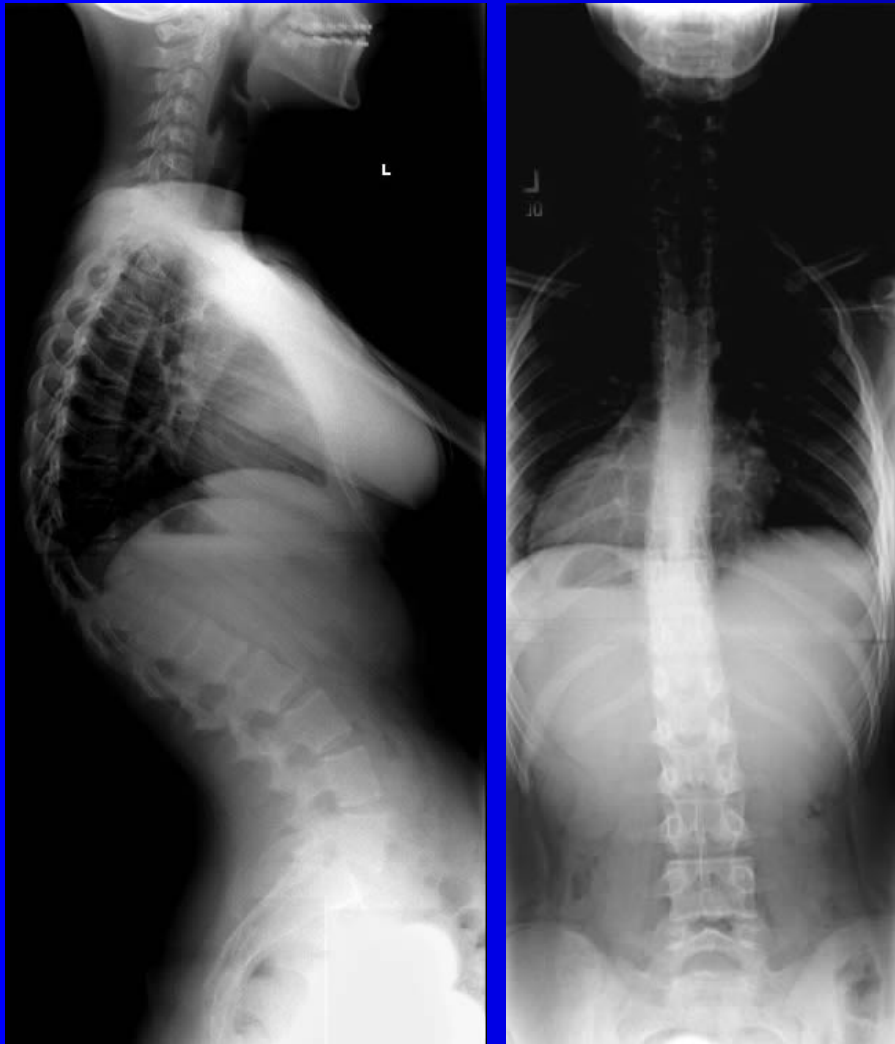


## Case Review: Scheurmann's Kyphosis

**Robert S Pashman, MD**

**Director of Scoliosis and Spinal Deformity  
Cedars Sinai Institute for Spinal Disorders**

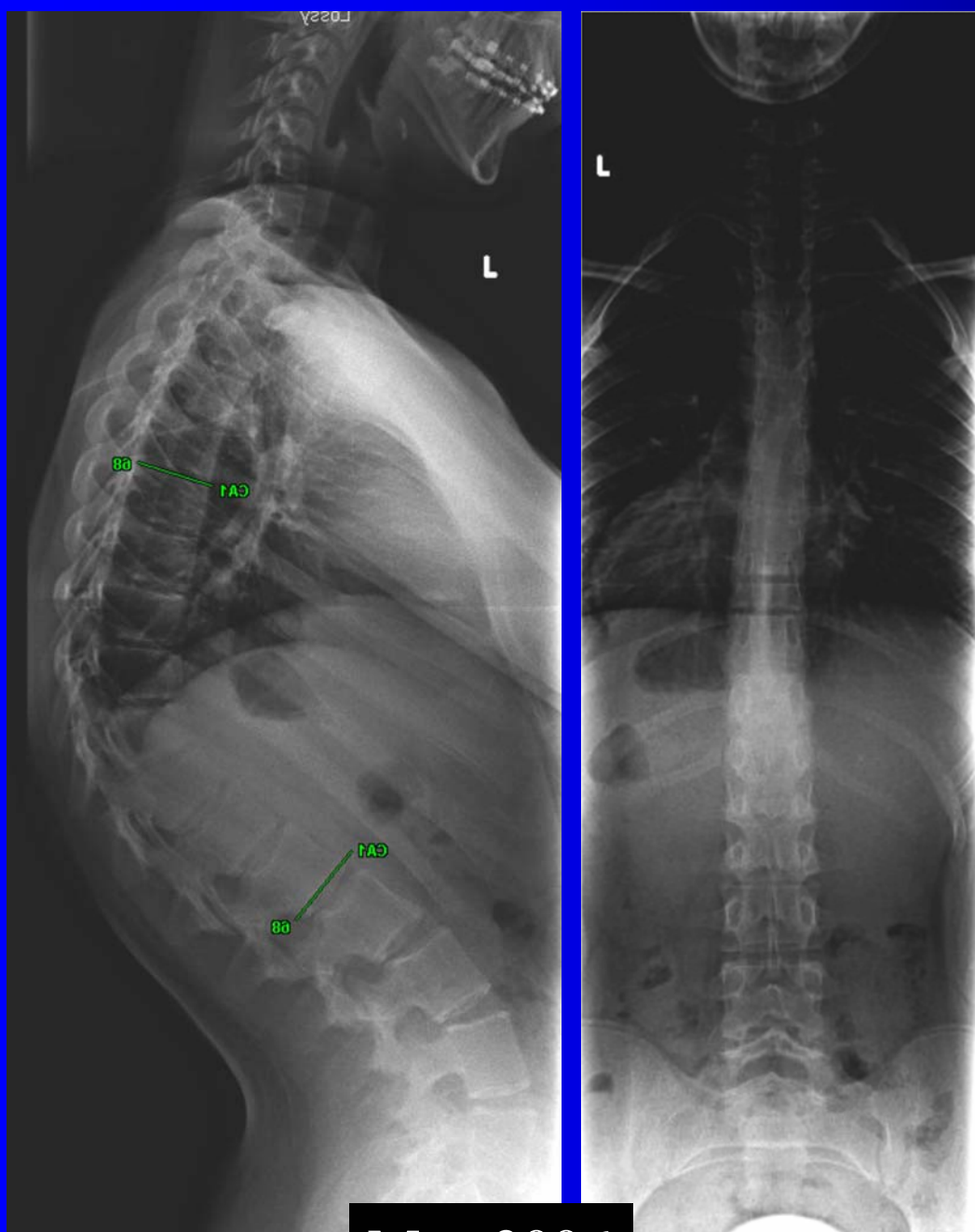
# Patient History



November 2005

November 2005, 11yo female presented with mild LBP, noticed curvature 1½ years ago

Rigid kyphotic deformity in the thoracolumbar area. The patient does not have any coronal deformity. On Adams forward bending, no lumbar or rib hump asymmetry. 60-degree curvature.

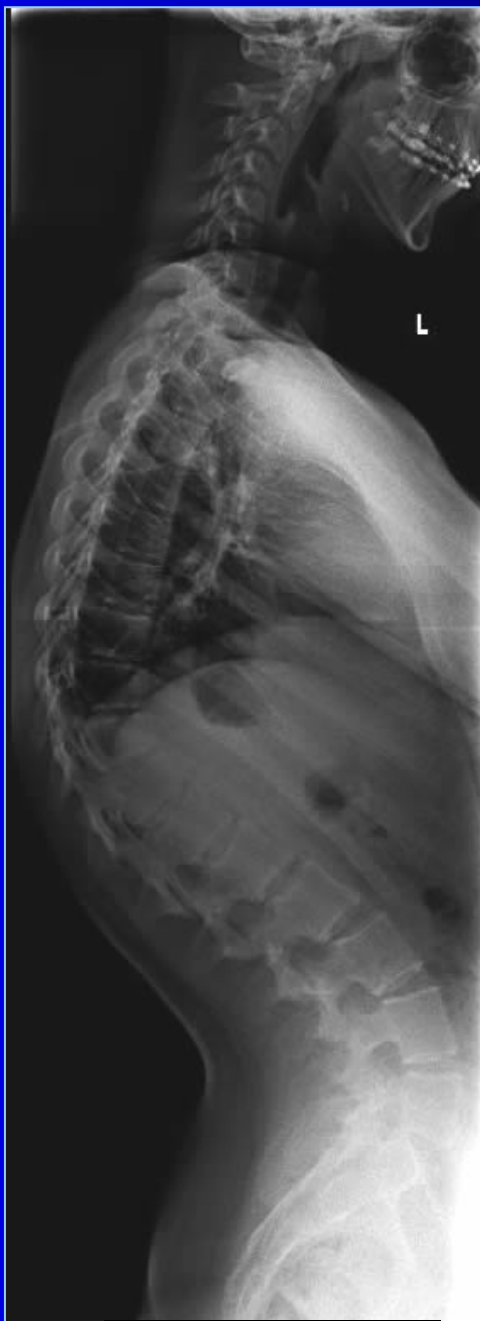


75 degree Scheuermann's Kyphosis with sharp angulation and apical Scheuermann located at T10-11 and has a 67° compensatory lumbar curve

May 2006



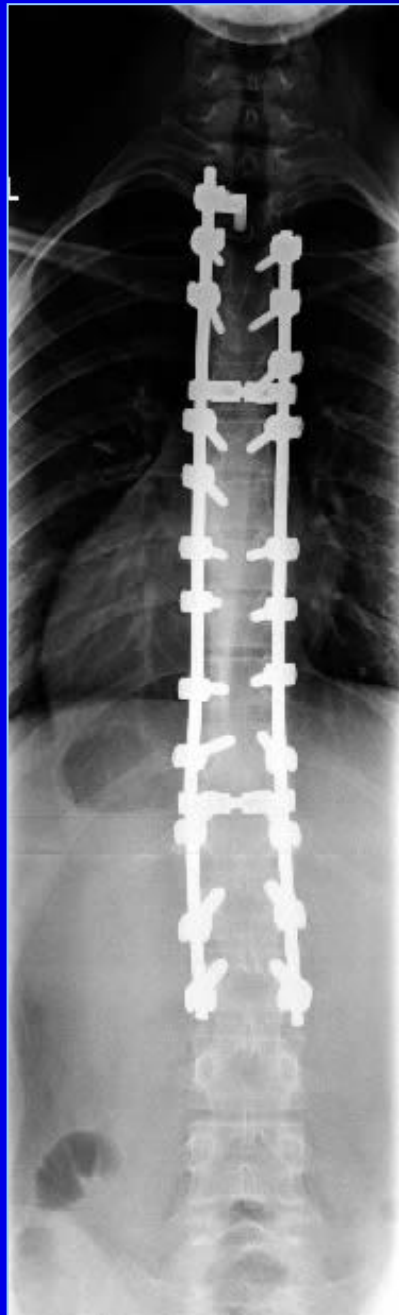
**November 2005**



**May 2006**

Braced 12/06 curve 60 degrees, slight improvement.

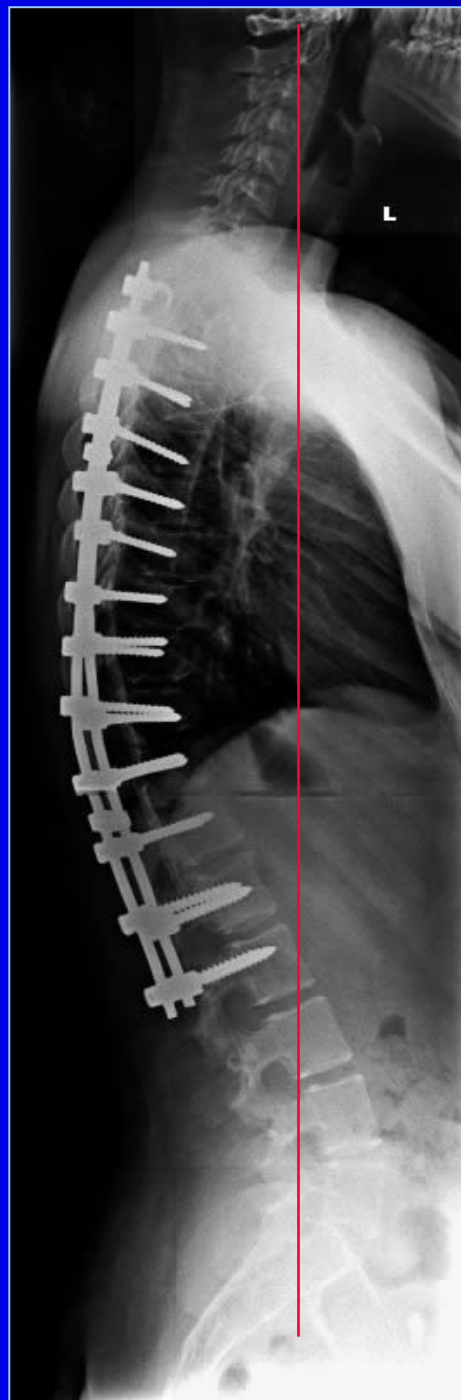
This is problematic in the sense that curves which cannot be corrected to within normal range or at least 50% because of flexibility issues will no doubt not respond adequately to bracing from a long term prognostic basis.



Posterior spinal fusion T2 to L2

Spinal osteotomy four-level  
Ponte complete resection  
posteriorly thoracic 8-9,  
thoracic 9-10, thoracic 11-12,  
and thoracic-lumbar

October, 2006



The curve has been reduced 44% from  $75^{\circ}$  to  $42^{\circ}$ . An excellent outcome.