

Case Review:

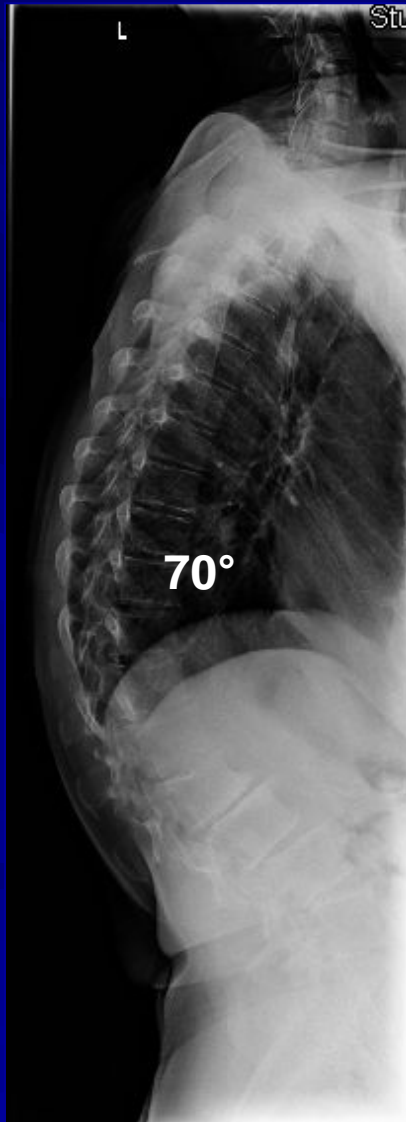
Severe Scheurmann's
Kyphosis treated with a
Posterior Spinal Fusion
from T2-Pelvis

Robert S Pashman, MD
Scoliosis and Spinal Deformity Surgery
www.eSpine.com

Patient History

- 58-year-old female
- Severe rigid thoracolumbar kyphosis probably due to Scheuermann kyphosis with superimposed degeneration.
- This has caused a rigid sagittal plane deformity. The hyperlordosis in the dorsal spine has caused a significant neural foraminal stenosis degeneration.
- Failed conservative therapy

Pre-op X-rays



Flex/Extension X-rays



The flexion and extension films show the rigidity of the spine.

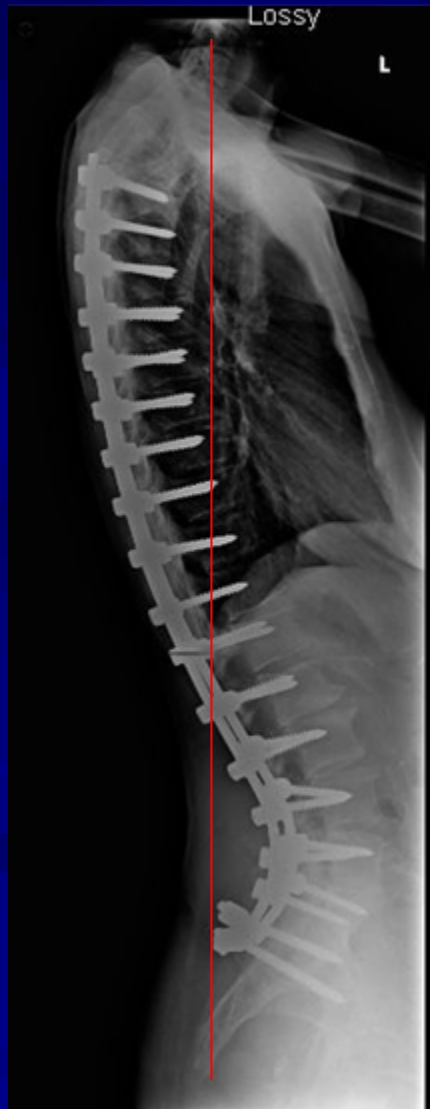
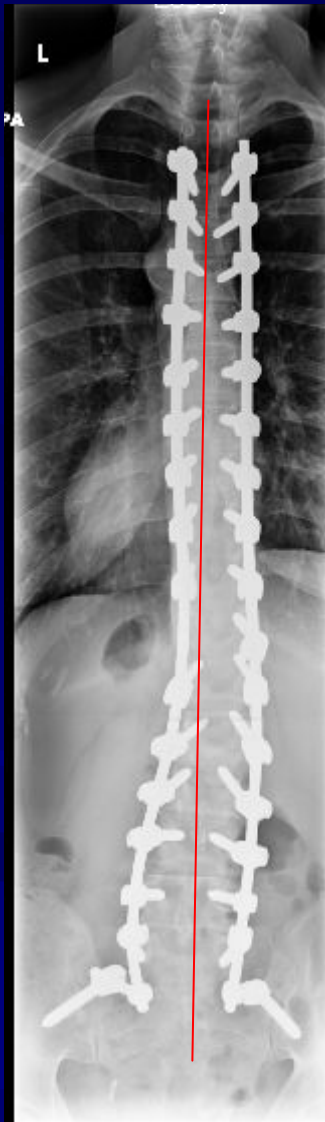
Indications for Surgery

1. Scheuermann kyphosis thoracolumbar spine.
2. Severe superimposed degeneration of thoracolumbar spine due to sagittal deformity.
3. Scoliosis.
4. Compensatory hyperlordosis of lumbar spine causing severe neural foraminal stenosis of thoracolumbar spine.
5. Failed conservative therapy.
6. Multiple co-morbidities including age, cachexia.
7. Rigid thoracolumbar kyphosis.

Surgical Strategy

- Segmental spinal instrumentation, thoracic 2 to sacral pelvis. This is an 18-level posterior instrumented fusion using CD 1/4-inch stainless steel rod screw construct.
- Bilateral pelvic exposures through separate incisions for placement of pelvic instrumentation.
- Interlaminar laminotomy, mesial facetectomy, lateral recess release decompression, L1-2, 2-3, 3-4, 4-5, 5-1 for severe lateral recess and foraminal stenosis.
- Smith-Peterson osteotomy through laminectomies and bilateral radial facetectomies, T9-10, T10-11, T11-12, T12-L1, L1-2, L2-3, L3-4, and L4-5.
- Posterior lateral fusion using locally harvested autogenous bone, T10, T2 down to the sacral pelvis.
- Intraoperative somatosensory evoked potential monitoring.
- Intraoperative fluoroscopy management.

Post-Op Films

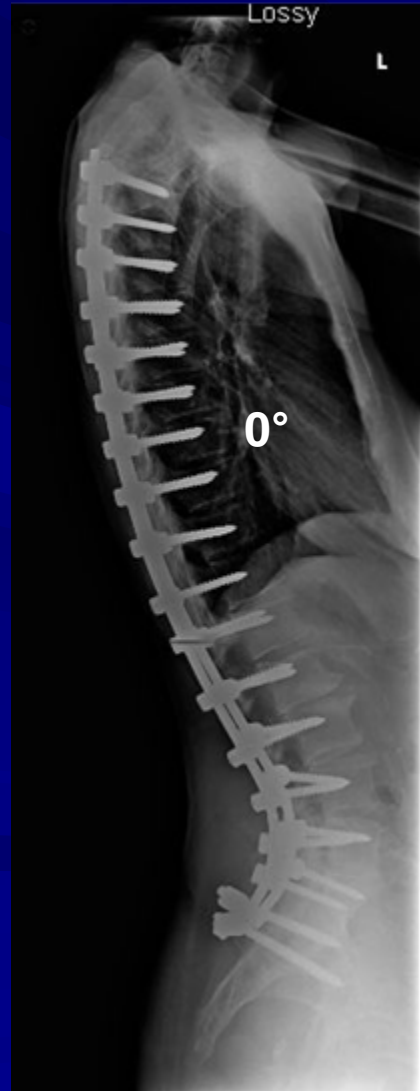
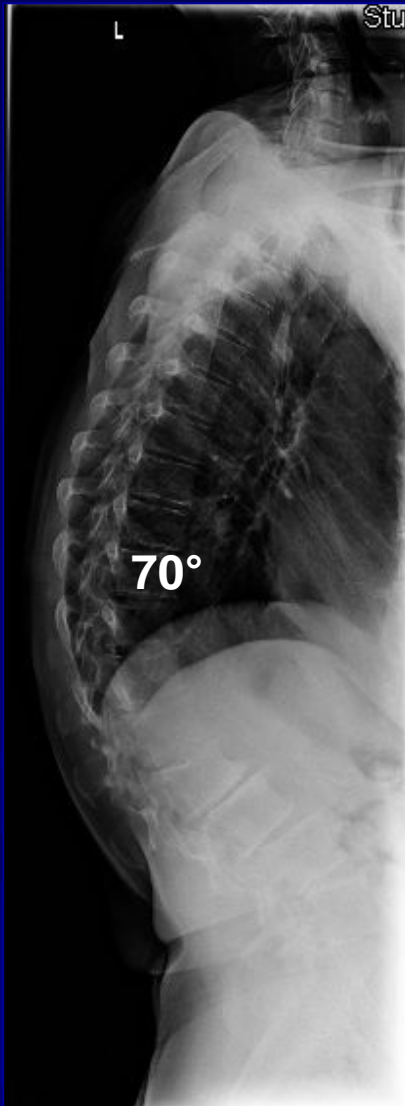


The patient plumb lines perfectly in both the sagittal and coronal planes.

Pre-Op/Post-op Comparison



Pre-Op/Post-op Comparison



The patient had a complete correction of her curvature, and gained 2 inches in height.